



# EURONETSUKE FEST 2018

11 - 13th May 2018

## Abstract

Inside this PDF you'll find details of the weekend's events, with maps and locations. A useful document to print out if you plan to attend any of the events.

V 1.0

A free set of events for Euronetsuke members

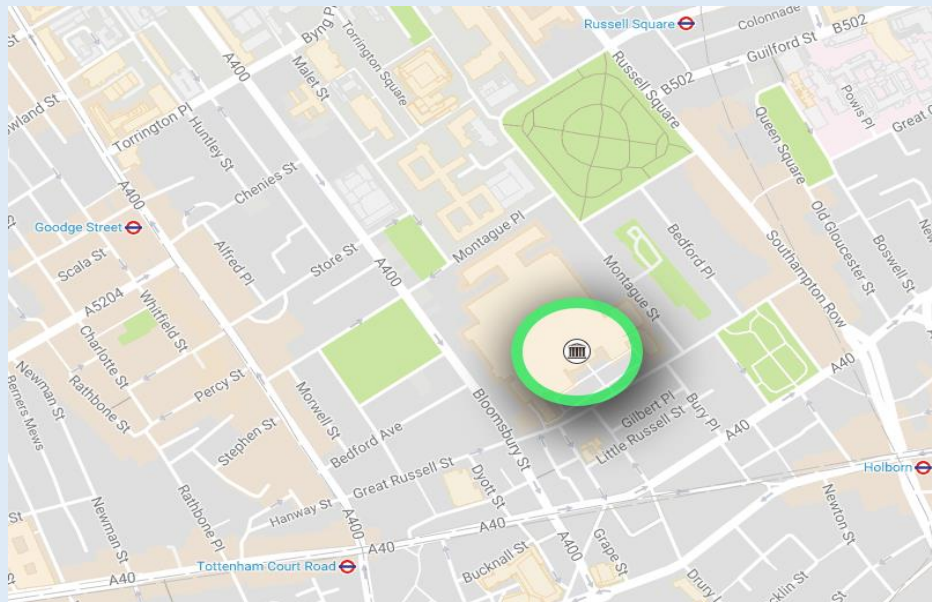
[www.euronetsuke.eu](http://www.euronetsuke.eu)

## Afternoon Event, Friday 11<sup>th</sup> May: British Museum Handling Session

### 1.30pm Meeting point

Entrance of the British Museum - Great Russell St, Bloomsbury, London WC1B 3DG.

The British Museum sits equidistance between Russell Square, Goodge Street, Holborn and Tottenham Court Road tube stations. Please print map below for directions.



We will be waiting at the front entrance from 1.45pm until 1.55pm.

NB: Any non-Euronetsuke members, or those needing to renew, will be able to sign up at the evening event. Please remember to bring £20 if you require membership.

### 2 – 4pm Handing session

The session will be located in the Asia Arts Study room. Noriko Tsuchiya, curator and author of the 2016 BM 100 masterpieces, will be our host for the session.

The two-hour session will feature 50 items from the collection. We encourage you take part and select a maximum of 5 pieces that interest you. You can find the collection online at the British Museum website. Selection is limited to availability, and you will need to submit your choices to Peter Ayre no later than Wednesday 11<sup>th</sup> April 2018.

Please note that due to room size limitations this session will be **restricted to the first 15 members that apply.**

**4 – 6pm Free Period**

A free period to grab dinner, share some drinks, or just wonder around and enjoy the British Museum until the start of the evening event.

## Evening Event, Friday 11<sup>th</sup> May: Swedenborg Sessions

**6 – 6.25pm**

### Location Swedenborg Hall

The evening's lectures take place at the historic Swedenborg Hall. The venue is a five-minute walk from the British Museum. This free event will be open to all members of the general public.



The Swedenborg Hall is located in Barter St, London WC1A 2TH.

**6.30 – 7.15pm**

### Douglas J.K. Wright Interviewed – Reminiscing on the netsuke world past

Max Rutherford will be interviewing the netsuke aficionado Douglas J.K. Wright.

Since 1945 Douglas J.K. Wright has been a renowned and well-respected auction specialist and London dealer in Japanese works of art. Both working for leading London auctioneers, Glendining & Co, Philips Son & Neal, and Phillips in their Oriental department and as a dealer, manager and then owner of S J Tommy in Holborn/ Piccadilly Arcade.

Douglas later took over the running of the Japanese department of Spink & Son before commencing his own Art Gallery, D.J.K. Wright Oriental Art, in Curzon Street W1. He later joined Sydney L Moss Ltd until retirement. His passion still abundant today, and remains as an active consultant for Mallams Auctioneers.

This is not to be missed. Be assured you will experience insightful and hilarious stories into the netsuke world past.

**7.15 – 7.30pm**

### Refreshments break

A selection of complementary drinks will be available for guests whilst the second session is set up. Euronetsuke will have a table in the room, providing an opportunity for individuals to open a membership. Please remember to bring £20 if you wish to join, or renew.

**7.30 – 8.30pm**

**Mitsuharu Matters – A lecture presented by Max Rutherford**



Max Rutherford will provide a lecture on Mitsuharu. An 18/19<sup>th</sup> century Kyoto artist that has much more to discover than found on first glance.

**8.30 – 9pm**

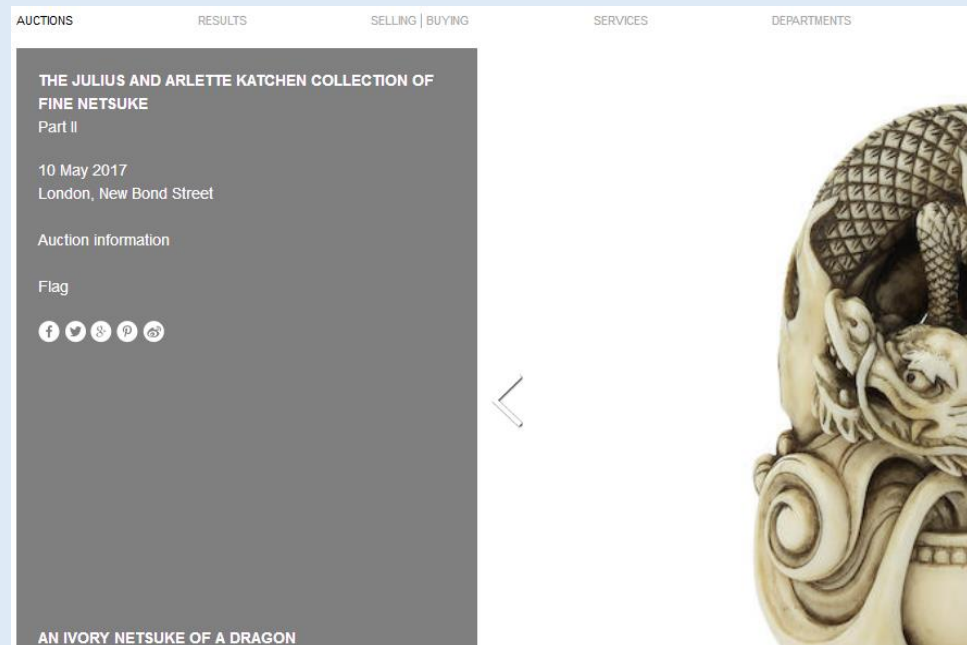
**Refreshments and mingle**

A selection of complementary drinks and an opportunity to talk with Max and other likeminded individuals.

**2 – 5pm**

### Handling Session at Bonhams

Suzannah Yip, director of the Bond Street Japanese department, has kindly confirmed Bonhams will provide an opportunity to handle the forthcoming Part III Katchen sale on the afternoon of Saturday 12<sup>th</sup> May 2018.



You will also be provided with a form to fill out (optional) for a Katchen sale sweepstake prize. £2 entry, no limit on the amount of the entries you decide to submit. For every entry £1 will be donated to Euronetsuke, the other £1 to the prize fund. Further details will be explained on the day.

**5.05pm**

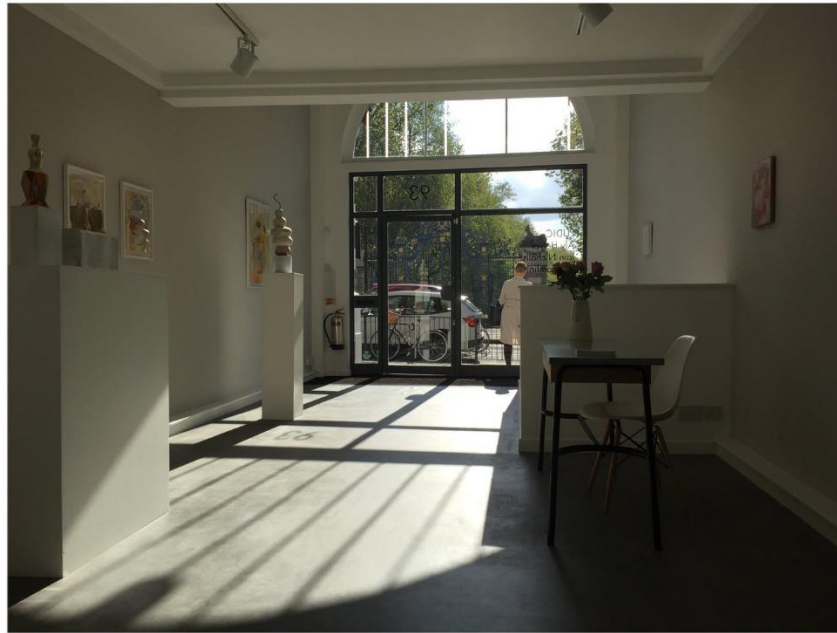
A guided 15 minute walk to the evening's entertainment venue.

## Evening Event, Saturday 12<sup>th</sup> May: *Make Mine a Double*

**5.30 – 7pm**

### **Welcome drinks + food**

Champagne, wine and a selection of soft drinks will be served, accompanied by Various Sushi, + Vegetarian options. Please note this event will be limited to the first 30 applicants attending the evenings talk. The evening will be hosted at the Herrick Gallery, located next to Green Park tube, 93 Piccadilly London W1J 7NQ.



You will be able to hand in the Katchen sweep stake forms on arrival, with the sweep stake entry fee to be handed in to Peter Ayre.

**7 – 8pm**

### **Make Mine a Double – A talk by Neil Holton**

Neil Holton will be providing a seated talk on the double meanings occasionally found in netsuke. Please note space will be **limited to the first 30 applicants**.

**8pm until Home**

### **Mingle and drinks**

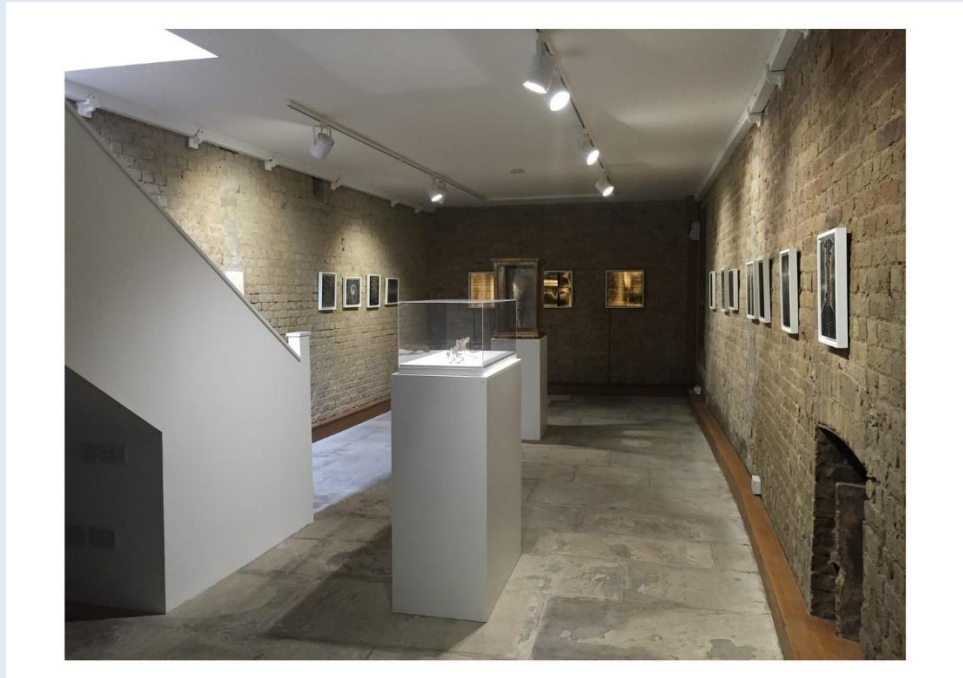
Post talk, drinks will continue to be served until close.

## Day Event, Sunday 13<sup>th</sup> May: *Lempertz Contemporary Netsuke*

**10am – 5pm**

### **Lempertz Contemporary Netsuke and Lacquer event**

Lempertz are hosting a Contemporary Netsuke and Lacquer event on the upper floor of Herrick Gallery, located next to Green Park tube, 93 Piccadilly London W1J 7NQ. Some of the artists will be on site and available during the day.



Refreshments will be provided throughout the event.

**5 – 6pm**

### **Free Period**

A free period whilst the venue is re-arranged for the evenings seated event.



## Evening Event, Sunday 13<sup>th</sup> May: Jay Hopkins - Revelations

<b>6 – 6.30pm</b>	<b>Welcome Refreshments</b>  Venue for the evening talk is Herrick Gallery, located next to Green Park tube, 93 Piccadilly London W1J 7NQ.
<b>6.30 – 7.30pm</b>	<b>Revelations – Jay Hopkins</b>  Jay Hopkins, connoisseur and collecting institution in his own right, will be providing insightful stories and revelations from days past. Neil Holton will be co-host, leading this relaxed informal interview.  Due to seating arrangements, this is limited to 30, and bookings will be taken on a first come first serve basis.
<b>7.30 - Home</b>	<b>Social drinks at a pub (TBA)</b>  To end the weekend's Euronetsuke Fest 2018 festivities, everyone will be welcomed to join us at a local pub (tba). Feel free to pop along to gossip on the forthcoming Katchen Sale, or just mingle amongst other collectors.

## Contact Details

---

<i>Peter Ayre</i>	<a href="mailto:ayrepj@aol.com">ayrepj@aol.com</a>	To participate in one, or all of the events, please state which events you intend to participate in with an email to Peter Ayre.
		Please find the email address listed to the left.